

Caribou: The next Montney oil sweet-spot

Ian, J. Cockerill
TSV-TMK Montney

Summary

A fully integrated resource evaluation of the Montney Play in NE British Columbia has identified and high-graded the Caribou area (94-G-09) as having particular attributes to suggest significant recoverable oil and liquids potential in the Montney Play.

Using zone attribute analysis for 1,400 digital wells and a petrophysical interpretation of 400 wells, the resource potential of the Montney Play in NE British Columbia has been evaluated and quantified using a process called Common Recovery Segment Mapping.

The resultant mapping and resource evaluation has successfully predicted the emergence of oil zones in the Montney at Tower and Inga. By analogy and calibration to the proven oil sweet-spots of the play, the geology in the Caribou area appears extremely prospective for oil in both the Upper and Lower Montney zones.

Figure 1 – Example of Net Pay calculated from Pickett and Effective Permeability for well 200-B-002-E/94-G-09.

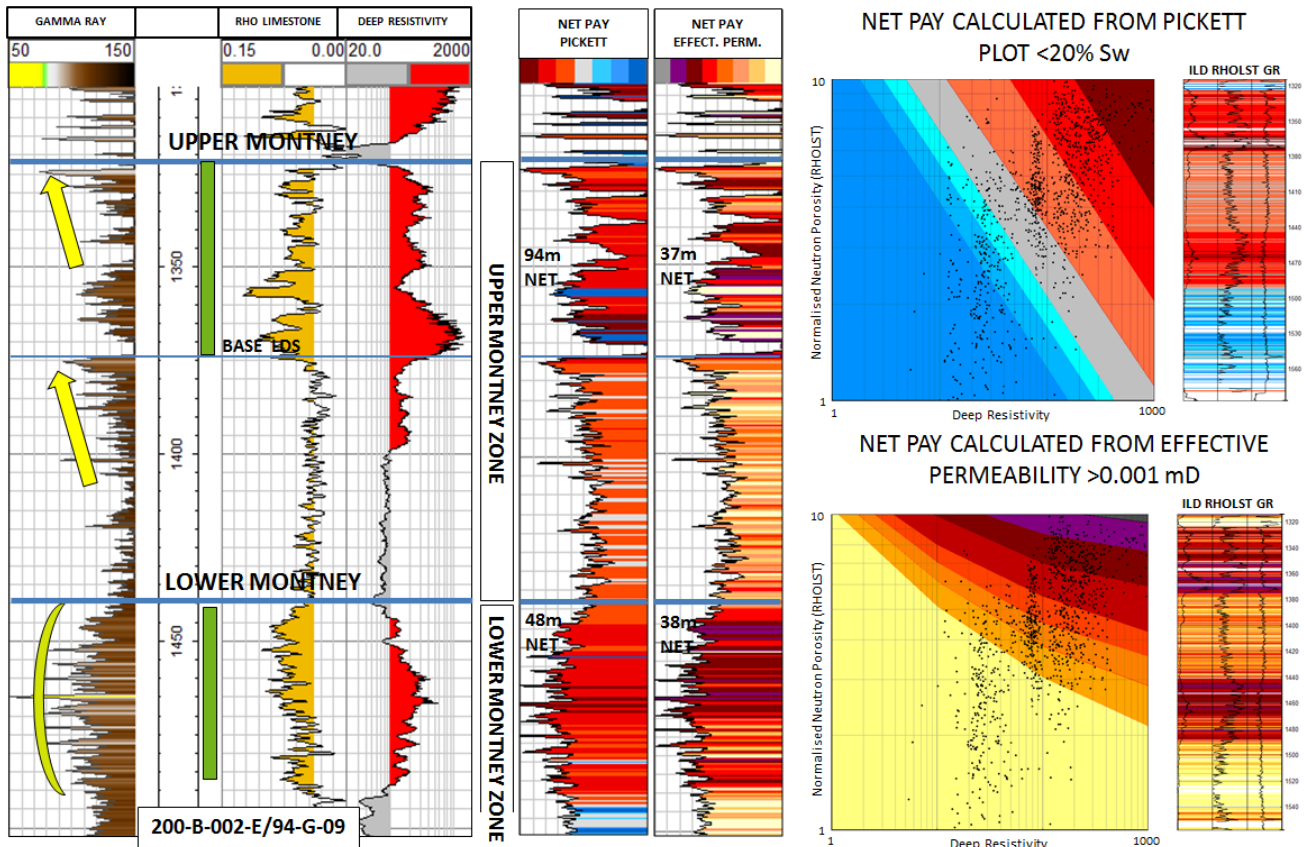
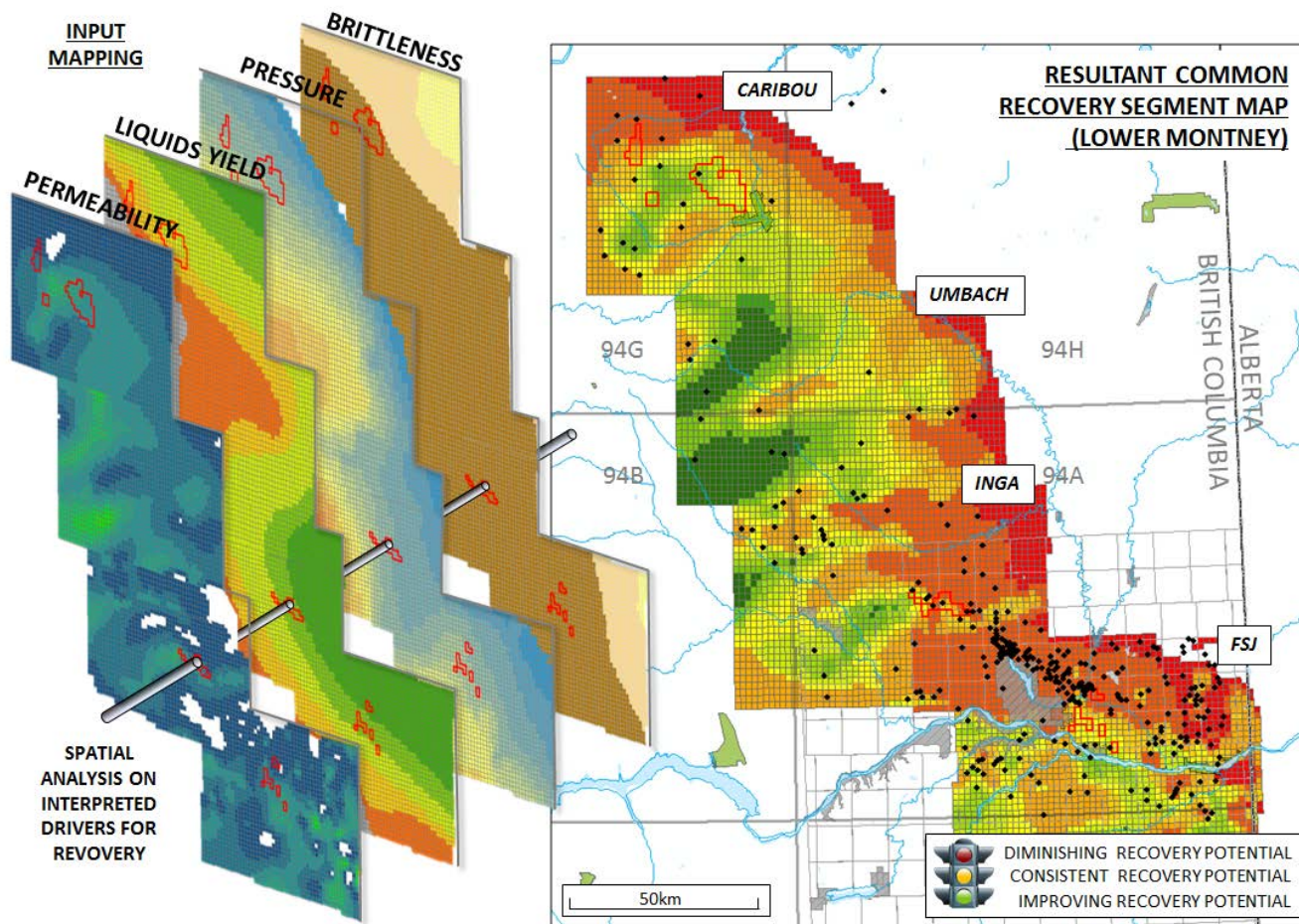


Figure 2 – Example of a Common Recovery Segment Map for the Lower Montney together with input mapping on the interpreted geological drivers for recovery, NE British Columbia.



Acknowledgements

TSV-TMK Montney is a Joint Venture between TSV Montney and TMK Montney, both Australian based publically unlisted companies. This paper is presented with permission and the support of both companies.